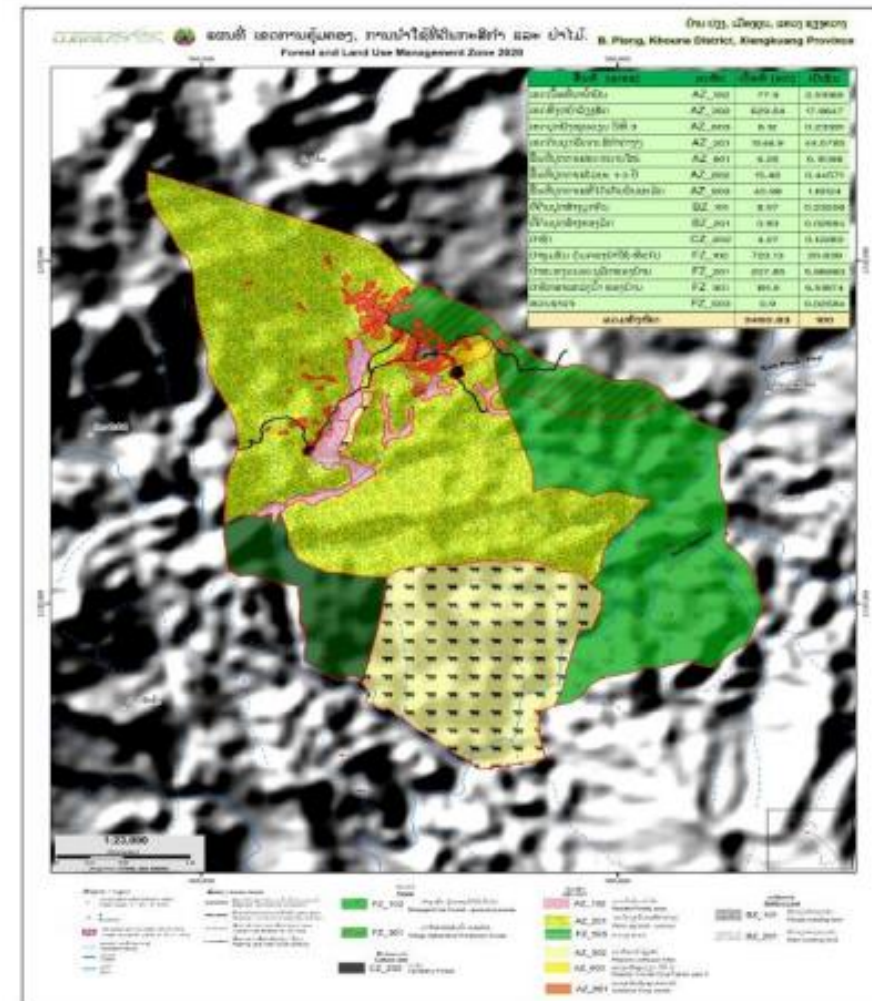


Findings Step 0



- Xiengkhouang province
- Khoum district:
 - Kumban Ketset
 - Pieng village
 - About 70 Km from the city town of Khoum





Basic information:

- Population: 117 people and 91 are women
- Divided into 3 units
- Ethic: Hmong and Tai Phoun

Ecological environment:



- Highlands or uplands are any mountainous shrouded houses
- Highly forest covered
- The specific climate and geography
- Conventional practice for farm system



- The farmers of Keoset have planted their coffee in natural forest at elevations between 1,150 and 1,450 metres





Social and productive environment

ຕາຕະລາງ 3 ສັງລວມອາຊີບຂອງປະຊາຊົນ.

ລ.ດ	ແຫຼ່ງລາຍຮັບ	ມູນຄ່າ	ລຳດັບ	ໝາຍເຫດ
1	ການຜະລິດເຂົ້າ	715,360,000	1	
2	ການລ້ຽງສັດ	448,800,000	2	
3	ກຳມະກອນ	256,800,000	3	
4	ເຄື່ອງປ່າຂອງດົງ	133,650,000	4	
5	ເງິນເດືອນ	124,176,000	5	
6	ຄ້າຂາຍ	124,000,000	6	
7	ການຜະລິດກາເຟ	106,010,000	7	
8	ຫັດຖະກຳ	34,900,000	8	
	ລວມ:	1,943,696,000		

(ຂໍ້ມູນການສຳພາດຄອບຄົວພາຍໃນບ້ານປຽງ, ເດືອນກັນຍາ, ປີ 2020)

Typology of agriculture production



Type of soil	Number of Pieces	Area (Ha)	Location
Paddy field	100	14,38	Shrouded village, Pieng mountain, Pieng Head
Coffee farm	105	36,76	Phapheo mountain, Neauheun mountain
Upland rice	24	4,30	Phapheo mountain
Pasture	65	40,20	Shrouded close to paddy field
Preserve for agriculture land	47	38,74	Phapheo mountain
Total		134,38	

Market context

- For coffee: cooperate with two companies, Muang Xieng and Comma through contract farming of high quality coffee.
- For other: rice, livestock and NTFP are sale through local traders and sale by themselves but quite small



Enabling environment for agroecology



- National and local institute that can support the agroecological transition of local producers eg: Green Growth and Green Extension
- DAFO, private sectors and NGO will provide support for the agroecology transition of local producers



Sample for data collection with TAPE

- **Sample for data collection with TAPE:**
- At least 35 producers or farms that will be part of the sample for data collection with TAPE.
- They have been selected because
 1. Applies **ecological concepts & principles** to optimize interactions between plants, animals, humans and the environment while taking into consideration **social aspects** needed for a **sustainable and fair food system**
 2. Highly **knowledge-intensive**, builds upon **farmers' collective knowledge & innovations** (attractive for rural youth)

Site of data collection

- @Xiengkhouang province
- @Khoun district:
 - @Kumban Ketset
 - @Pieng village
 - @ 35 to 40 farms/farmers

